

Hard Red Winter Wheat

SY GRIT

Straw Strength and
Drought Tolerance

- ❑ A yield leader—even in tough, dry conditions
- ❑ Best straw strength in the AgriPro lineup
- ❑ Widely adapted in Kansas, Oklahoma and Texas
- ❑ Good disease tolerance package
- ❑ Susceptible to low pH soils with high aluminum levels
- ❑ Medium early maturity

AgriPro[®]

Your best source of information
on wheat varieties is your local
AgriPro Associate.

To find out more, visit
AgriProWheat.com.

syngenta[®]

Photos are the property of Syngenta or used under agreement. © 2017 Syngenta.
AgriPro[®] and the Syngenta logo are trademarks of a Syngenta Group Company. PVPA
1994—Unauthorized propagation prohibited. Plant variety protection granted or
applied for Syngenta varieties. P 2/2017

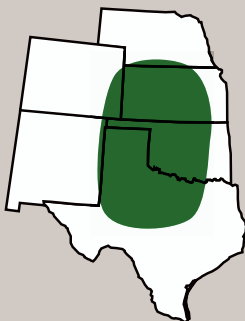
Hard Red Winter Wheat

SY GRIT

Straw Strength and Drought Tolerance

Features

- Plant Height **Medium Tall**
- Winter Hardiness **Average**
- Straw Strength **Excellent**
- Maturity **Medium Early**



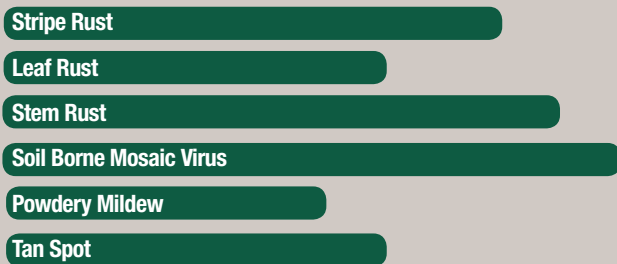
Area of primary adaptation

Head & Grain

- Type **Awed**
- Seed Size **Medium**
- Test Weight **Very Good**
- Chaff Color **White**
- Quality **Acceptable**



Disease



Susceptible

Intermediate

Tolerant



Ratings based on field observations from multiple locations and multiple years. Ratings are not absolute and may change as additional data are collected or environmental conditions change.