

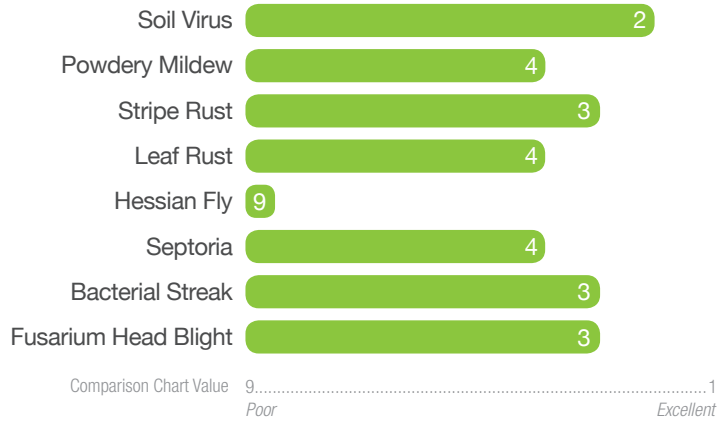
SY 547

Soft Winter Wheat Variety
Fully-Loaded Performer

Highlights

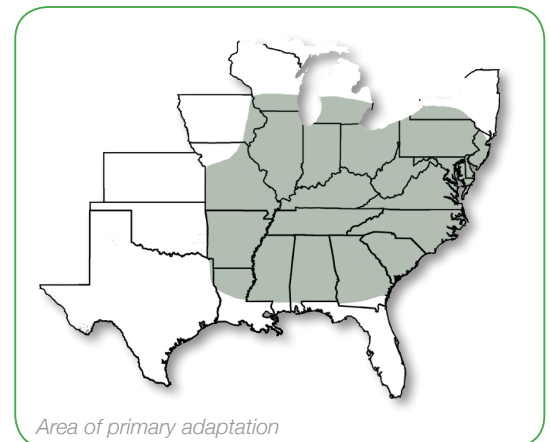
- Ideal for double cropping
- Great disease package
- Good for variable soil conditions

Disease and Pest Tolerance



Agronomics

Maturity	Medium
Test Weight	Very good
Height	Medium tall
Straw Strength	Good
Head Type	Awnless
Winter Hardiness	Very good
Planting Rate	High
Planting Date	Normal to late
Vernalization	Long



Note: these agronomic assessments are made by Syngenta scientists and reflect each variety's relative performance within these characteristics through the 2018 crop year. Specific conditions may cause variations within characteristics. These relative protection values are based on current pest and disease populations and have been known to shift periodically and may cause changes in specific evaluations. Resistance to many other diseases and pests is sensitive to environmental conditions, plant development stages and the presence and intensity of other diseases which may result in specific evaluation inconsistencies. This chart is updated annually to reflect the most current trends. Photos are the property of Syngenta or used under agreement. ©2019 Syngenta. Some or all of the varieties may be protected under one or more of the following: Plant Variety Protection, United States Plant Patents and/or Utility Patents and may not be propagated or reproduced without authorization. AgriPro® and the Syngenta logo are trademarks of a Syngenta Group Company. 8/2019