

AgriPro Brand

Hard Red Spring Wheat Variety

SY 611 CL²

High Yields with Herbicide Tolerance

- ☐ Very good yield potential—competes with non-herbicide tolerant varieties
- ☐ Manage wild oats, cheatgrass, goatgrass and more with two-gene herbicide tolerance
- ☐ Medium-early maturity with semi-dwarf height
- ☐ Good to very good protein and straw strength
- ☐ SY Soren pedigree



AgriPro[®]

For a list of AgriPro Associates
and variety performance data, visit
AgriProWheat.com.

©2020 Syngenta. Some or all of the varieties may be protected under one or more of the following: Plant Variety Protection, United States Plant Patents and/or Utility Patents and may not be propagated or reproduced without authorization. AgriPro[®] and the Syngenta logo are trademarks of a Syngenta Group Company. NP - 1/2020

syngenta[®]

AgriPro Brand Wheat Variety

SY 611 CL²

High Yields with Herbicide Tolerance

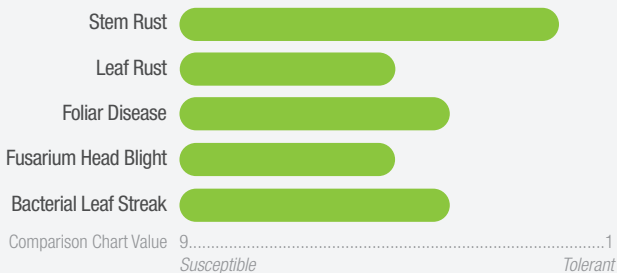
Agronomics

Plant Height	Medium
Straw Strength	Good to very good
Maturity	Medium-early

Grain

Type	Hard red spring
Yield	Very good
Test Weight	Good to very good
Protein	Good to very good
Quality	Average

Disease Tolerance



Ratings based on field observations from multiple locations and multiple years. Ratings are not absolute and may change as additional data are collected or environmental conditions change.



Syngenta performance trial data available at AgriProWheat.com

