

AgriPro Brand

Hard Red Spring Wheat Variety

SY McCloud

Advancing Economic Return

- ☐ Very high protein + Yield = Great Returns
- ☐ Excellent test weight
- ☐ Strong disease package
- ☐ Medium-early maturity and good standability
- ☐ Adapted to North Dakota, Minnesota and Montana

AgriPro®

For a list of AgriPro Associates
and variety performance data, visit
AgriProWheat.com.

©2020 Syngenta. Some or all of the varieties may be protected under one or more of the following: Plant Variety Protection, United States Plant Patents and/or Utility Patents and may not be propagated or reproduced without authorization. AgriPro® and the Syngenta logo are trademarks of a Syngenta Group Company. NP - 1/2020

syngenta®

AgriPro Brand Wheat Variety

SY McCloud

Advancing Economic Return

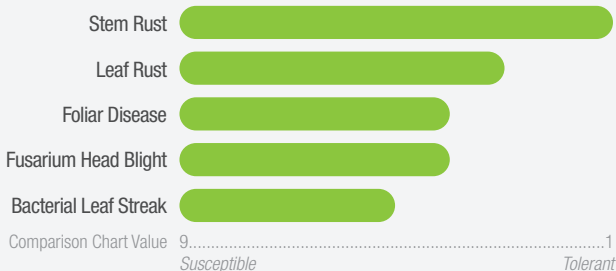
Agronomics

Plant Height	Medium tall
Straw Strength	Good to very good
Maturity	Medium-early

Grain

Type	Hard red spring
Yield	Very good
Test Weight	Very good to excellent
Protein	Very good
Quality	Good

Disease Tolerance



Ratings based on field observations from multiple locations and multiple years. Ratings are not absolute and may change as additional data are collected or environmental conditions change.



Syngenta performance trial data available at AgriProWheat.com

syngenta[®]