

Focused
on Performance



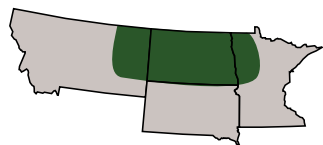
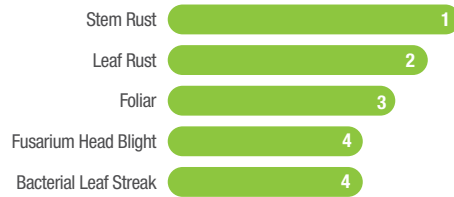
New for 2025

AP Elevate

Elevating Wheat Yield Potential

- » Excellent combination of yield and protein potential
- » Strong fusarium head blight and bacterial leaf streak tolerance
- » Very good straw strength
- » Excellent harvestability
- » Widely adapted

Disease Tolerance



Area of primary adaptation

Ratings based on field observations from multiple locations and multiple years. Ratings are not absolute and may change as additional data are collected or environmental conditions change.

Spread your risk...
plant more than one variety

2025 Northern Plains Spring Wheat Seed Guide



SYNGENTA
43225 COUNTY ROAD 97
BRIGGSDALE, CO 80611

RETURN SERVICE REQUESTED



2025

NORTHERN PLAINS SPRING WHEAT SEED GUIDE



Performance Summary

2022-2024 Syngenta Data

Western North Dakota

Variety	3-Yr Yield bu/ac	Protein %	Economic Return ¹	
			\$/Bu	Gross \$/A
SY Valda	85.2	14.2	5.91	503
AP Elevate	83.6	14.5	6.08	508
AP Gunsmoke CL2	82.2	15.2	6.44	529
SY 611 CL2	82.1	14.9	6.28	515
AP Smith	81.9	15.0	6.31	517
AP Murdock	81.7	14.7	6.20	506
SY Ingmar	80.4	15.4	6.55	527
SY McCloud	78.4	15.7	6.68	523
SY Longmire	78.0	14.8	6.25	487

Eastern North Dakota and Minnesota

Variety	3-Yr Yield bu/ac	Protein %	Economic Return ¹	
			\$/Bu	Gross \$/A
AP Elevate	88.1	15.0	6.35	559
SY Valda	87.7	14.5	6.07	533
AP Smith	84.1	15.1	6.39	537
SY 611 CL2	83.3	15.3	6.48	540
AP Gunsmoke CL2	83.1	15.2	6.44	535
AP Murdock	83.0	14.6	6.12	508
SY Ingmar	82.8	15.4	6.56	544
SY Longmire	78.7	15.3	6.47	509

South Dakota

Variety	3-Yr Yield bu/ac	Protein %	Economic Return ¹	
			\$/Bu	Gross \$/A
SY Valda	62.9	15.6	6.67	420
AP Gunsmoke CL2	59.6	15.9	6.83	407
AP Revolution	58.5	16.2	6.86	402
SY Ingmar	56.8	16.4	6.86	390
AP Murdock	56.0	15.9	6.83	383

¹ Economic return calculated by using the three-year yield average multiplied by the average grain price (\$5.80/bu) on 10/8/2024 from 18 locations in ND/SD/MN. (+) 10.6 cents per 1/5th premium over 14% protein. (-) 12.0 cents per 1/5 discount under 14% protein.

Performance and Consistency

With AgriPro® brand wheat varieties continuing to push for genetic diversity, it's no wonder AgriPro makes up the largest portfolio in the wheat industry and consistently ranks in the top yield groups in every region. It's time to plant top-performing wheat varieties in your field.

AgriPro Associates

Your local AgriPro Associate is a professional seedsman who grows, conditions, treats and sells AgriPro brand certified wheat seed. They are your best source for information and seed for every acre of your operation. A complete list of Associates can be found at AgriProWheat.com.

2025 AgriPro Spring Wheat Comparison Chart

	Test Weight	Protein	Heading	Maturity	Height	Straw Strength	Stem Rust	Leaf Rust	Foliar Disease	FHB	BLS
New! AP Elevate	2	5	6	6	4	3	1	2	3	4	4
AP Gunsmoke CL2	2	3	5	5	5	3	4	2	—	4	5
AP Murdock	2	5	4	3	4	4	3	2	4	4	4
SY 611 CL2	4	4	5	4	4	4	2	5	4	3	4
SY Rockford	4	4	6	6	6	4	2	5	3	3	7
SY Valda	2	6	5	7	5	5	3	2	3	4	4
AP Smith	2	3	6	6	4	2	1	6	—	4	3
SY McCloud	2	3	5	4	6	4	1	3	4	4	5
SY Ingmar	2	3	5	5	5	3	2	3	3	3	3
SY Longmire	4	3	5	5	5	5	2	4	4	5	4
Faller	2	6	6	6	7	7	1	6	4	3	3
Glenn	1	3	3	3	8	7	1	5	5	3	4
Linkert	3	3	5	5	4	2	1	3	4	4	4
Shelly	3	6	6	6	5	6	2	6	NA	4	5
MN-Torgy	3	3	6	7	6	5	1	NA	NA	3	3
WB9590	3	3	4	5	4	2	3	3	6	6	6
WB9719	2	4	6	6	5	2	1	4	NA	6	5
LCS Cannon	4	5	2	2	5	4	NA	NA	NA	3	4

General
 1-2 = Excellent
 3-4 = Very Good
 5 = Good
 6-7 = Fair
 8-9 = Poor

Maturity:
 1 = Earliest
 9 = Latest

Height:
 1 = Shortest
 9 = Tallest

Protein Content:
 1 = Highest
 9 = Lowest

These agronomic assessments are made by Syngenta scientists and reflect each variety's relative performance within these characteristics through the 2024 crop year. Specific conditions may cause variations within those characteristics. These relative protection values are based on current pest and disease populations, which have been known to shift periodically and may cause changes in specific evaluations. Resistance to many other diseases and pests is sensitive to environmental conditions, plant development stages and the presence and intensity of other diseases which may result in specific evaluation inconsistencies. This chart is updated annually to reflect the most current trends.

©2025 States Plant Patents and/or Utility Patents and may not be propagated or reproduced without authorization. AgriPro® and the Syngenta logo are trademarks of a Syngenta Group Company. NP - 10/2024

Yield

AP Gunsmoke CL²
Double-Barreled Performance

- » Powerful yield and protein combination for high economic return
- » Handles stress and marginal soil conditions well
- » Designed for western North Dakota, Montana, and western South Dakota
- » Added benefit of two-gene Beyond® herbicide tolerance

AP Murdock

Yield Muscle and Early Maturity

- » Excellent yield with good protein
- » Great harvestability
- » Very good standability
- » #3 for planted acres in North Dakota

SY 611 CL²

High Yields with Herbicide Tolerance

- » Superior yield potential with semi-dwarf height
- » Two-gene to manage Group 1 resistant wild oats

SY Valda

Consistent Yields and Protein

- » Top-end yield potential from slightly later maturity
- » Strong disease tolerance package
- » #2 for planted acres in North Dakota

Protein

AP Smith
Stands Strong

- » Superior straw strength and medium-late maturity
- » Widely adapted—impressive performance across the Northern Plains
- » High protein type with high yield potential for maximum economic returns

SY McCloud

Advancing Economic Return

- » Very high protein plus yield equals Great Returns
- » Excellent test weight
- » Medium-early maturity

SY Ingmar

Top Choice for Economic Return

- » High protein potential
- » Broad adaptation

Sawfly Control

SY Longmire

Solid Stem Built to Yield

- » Bred to combat wheat stem sawfly damage
- » Broadly adapted
- » High protein potential

Wheat planted acres rankings as published by USDA NASS, July 2024.

