

# AgriPro HY141

**Hybrid** Hard Red Spring Wheat

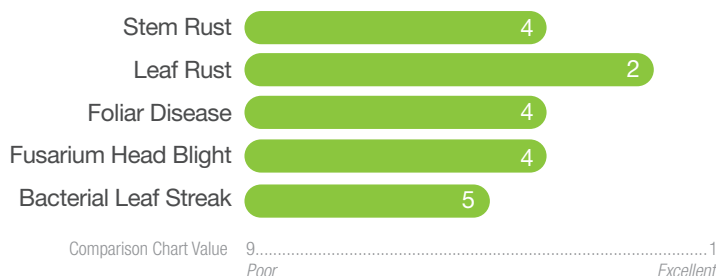
## Highlights

- Consistent, high yield potential throughout the Northern Plains
- Similar agronomics to SY Valda, but with an earlier finish
- Excellent end-use quality
- 80% seeding rate compared to normal

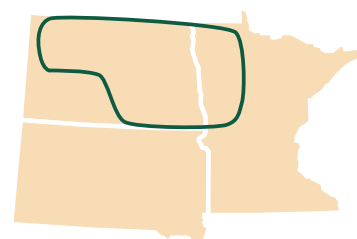
## Agronomics

Maturity	Medium
Test Weight	Excellent
Protein	Fair to Good
Height	Medium-Tall
Straw Strength	Fair

## Disease and Pest Tolerance



## Area of Adaption



## Three-Year Yield Trial Summary

Syngenta Data, 2023-2025

Variety	Yield Bu/A	% Yield of SY Valda	Test Weight Lb/A	Protein %	Maturity	Height	Straw Strength
<b>AgriPro HY141</b>	<b>87.1</b>	<b>106</b>	<b>59.5</b>	<b>14.0</b>	<b>5</b>	<b>6</b>	<b>6</b>
SY Valda	82.0	100	58.5	14.2	7	5	5
WB9590	81.9	100	59.4	15.2	5	4	2

64 location-years; 40 in eastern ND/MN and 24 in western ND

Call your local AgriPro® Associate for more information and seed availability.

**Note:** these agronomic assessments are made by Syngenta scientists and reflect each variety's relative performance within these characteristics though the 2025 crop year. Specific conditions may cause variations within characteristics. These relative protection values are based on current pest and disease populations and have been known to shift periodically and may cause changes in specific evaluations. Resistance to many other diseases and pests is sensitive to environmental conditions, plant development stages and the presence and intensity of other diseases which may result in specific evaluation inconsistencies. This chart is updated annually to reflect the most current trends.

©2025 Syngenta. **Some or all of the varieties may be protected under one or more of the following: Plant Variety Protection, United States Plant Patents and/or Utility Patents and may not be propagated or reproduced without authorization.** AgriPro® and the Syngenta logo are trademarks of a Syngenta Group Company. NP 10/2025 A