

# AgriPro HY155

**Hybrid** Hard Red Spring Wheat

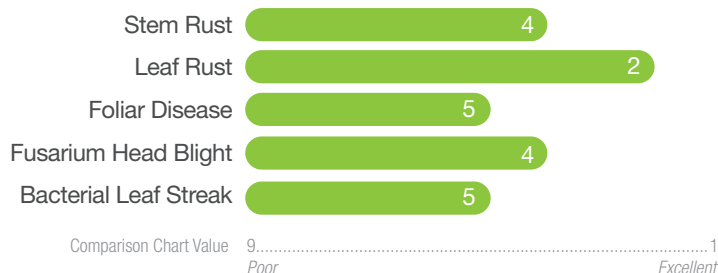
## Highlights

- Consistent, high yield potential across eastern North Dakota and western Minnesota
- Highest protein hybrid available, equal to SY Valda
- Similar agronomics to SY Valda, but with an earlier finish
- Excellent end-use quality
- 80% seeding rate compared to normal

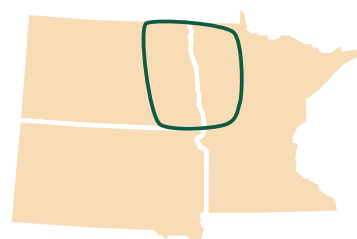
## Agronomics

Maturity	Medium
Test Weight	Excellent
Protein	Good
Height	Medium-Tall
Straw Strength	Good

## Disease and Pest Tolerance



## Area of Adaption



## Three-Year Yield Trial Summary

Syngenta Data, 2023-2025

Variety	Yield Bu/A	% Yield of SY Valda	Test Weight lb/a	Protein %	Maturity	Height	Straw Strength
AgriPro HY155	92.4	108	60.2	14.4	5	6	5
AgriPro HY141	91.7	107	59.8	13.8	5	6	6
SY Valda	85.5	100	58.8	14.2	7	5	5
WB9590	85.5	100	59.3	15.1	5	4	2

23 location-years in eastern ND and western MN

Call your local AgriPro® Associate for more information and seed availability.

**Note:** these agronomic assessments are made by Syngenta scientists and reflect each variety's relative performance within these characteristics though the 2025 crop year. Specific conditions may cause variations within characteristics. These relative protection values are based on current pest and disease populations and have been known to shift periodically and may cause changes in specific evaluations. Resistance to many other diseases and pests is sensitive to environmental conditions, plant development stages and the presence and intensity of other diseases which may result in specific evaluation inconsistencies. This chart is updated annually to reflect the most current trends.

©2025 Syngenta. **Some or all of the varieties may be protected under one or more of the following: Plant Variety Protection, United States Plant Patents and/or Utility Patents and may not be propagated or reproduced without authorization.** AgriPro® and the Syngenta logo are trademarks of a Syngenta Group Company. NP 10/2025 A